



Owners & Developers  
M/s. Mangaldeep  
E-mail: mangaldeepjodhpur@gmail.com

Architect  
SKYLINE ARCHITECTS  
Mumbai

Engineers & RCC Consultants  
M/s. U. D. CHANDE  
Consulting Engineer

Site Address  
Plot No. 10, Khasra No. 801  
Street No. 5 (Shyam Nagar),  
Gram Geva, JODHPUR - 342008

## Amenities

- Designer Entrance Lobby
- Flat open from all the sides
- Marble floorings in all rooms
- Each room and hall have large comfortable balconies
- Painted walls and ceiling in the flat
- Modular Kitchen
- Water Purifier in Kitchen
- Gysar in all bathrooms and kitchen
- Ceiling Fans in all rooms
- Ceramic tile dedo up to door height
- Cable TV line in all rooms
- French Sliding Windows of Standard gauge Aluminum, with tinted glass and lock systems
- Main Entrance made of Teakwood frame and flush door
- ISI marked material for Electric, Sanitary and Plumbing work
- Two Elevators of reputed brand with power backup
- Individual car parking for each flat
- Beautiful landscape garden, swimming pool, Gym and health club in building compound
- Complete power backup facility for common utilities
- CC TV intercom system in each flat
- Round the clock security, security cabin equipped with cctv and intercom

Owner & Developers  
**M/s. Mangaldeep**  
**Jodhpur, Rajasthan**

Regd. Office:  
D 39, PWD Colony, Jodhpur  
Telefax: 0291-2435003 Cell: 9414107099, 9351766361  
Email: mangaldeepjodhpur@gmail.com

The information and photographs contained herein are subject to change and cannot form an offer or contract. While every reasonable care has been taken in providing the information, the owner or his agents cannot be held responsible for any inaccuracies. The promoters reserve their rights to make alterations, additions and amendments as may be necessary and from time to time without any notice. This is only a brochure and does not have any legality. All dimensions mentioned in the plans are for unfinished walls, i.e. without considering plaster, POP, etc. All drawings and images are computer generated, conceptual drawing of the architect and the reality is bound to be different.

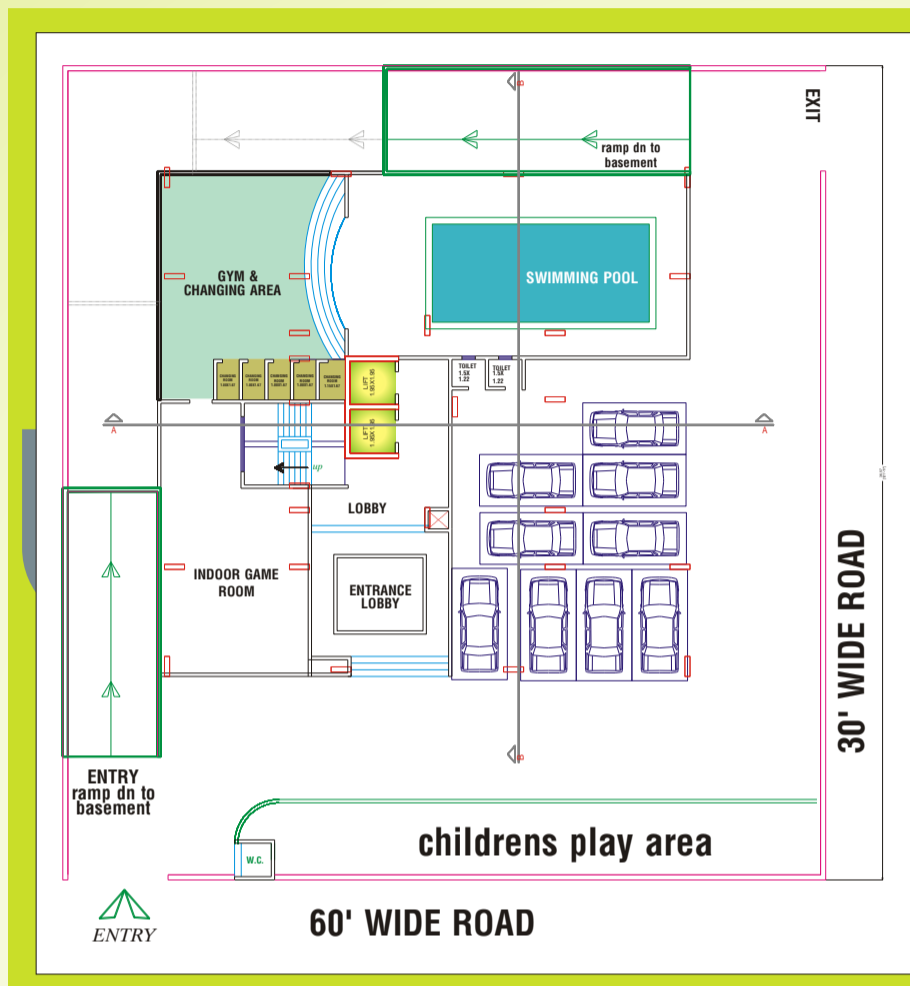
Discover  
your  
dreams



A Project by: M/s. Mangaldeep



### Floor Plan - Ground Floor

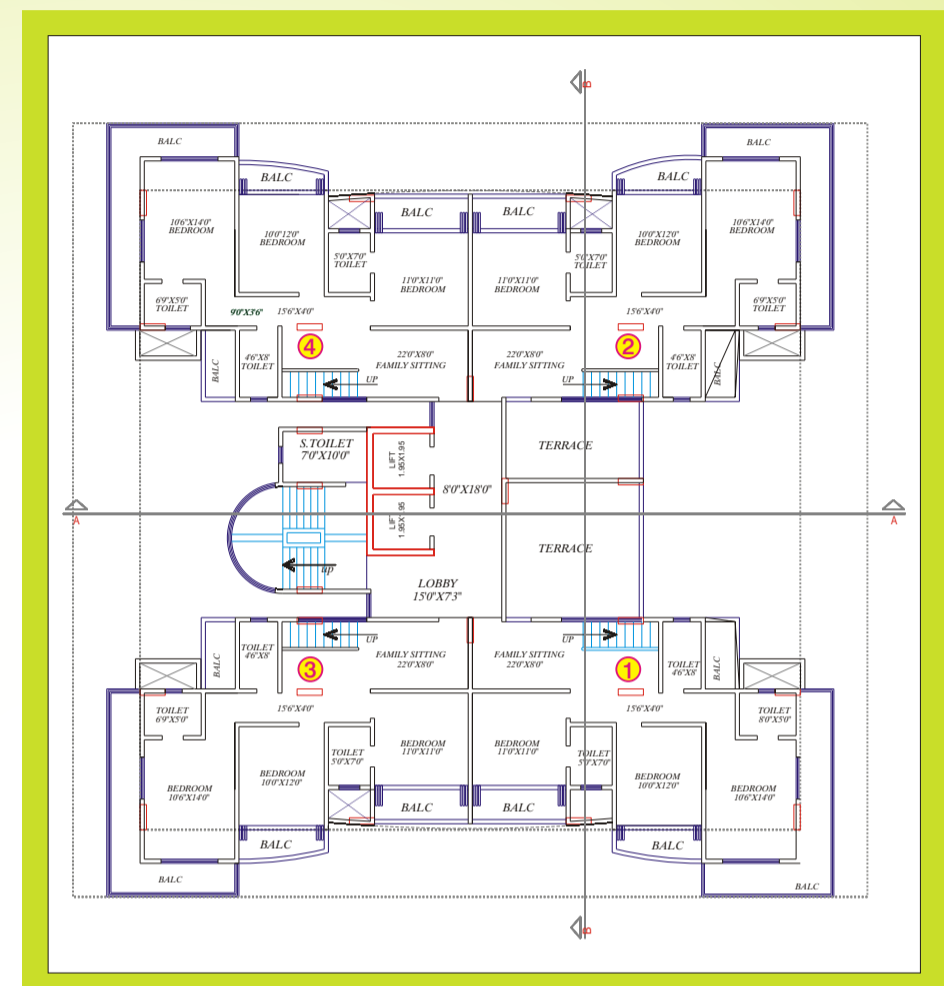


Mangaldeep promoted by **R. S. Lodha and Rakesh Mehta**, both professionally qualified Chartered Accountants having varied experience have joined hands with the mission to set a benchmark in quality construction in **SUNCITY**. The project has been conceived as a dream project encompassing the best structural design and amenities as comparable to any high class multistory complexes in cities like Mumbai. Project will consist of **20 flats** and **4 Duplex**, with all modern amenities, cross ventilation, open spaces, and eco-friendly design. M/S Skyline Architect (Mumbai) are architect and M/S U. D. Chande are the structural engineers to the project.

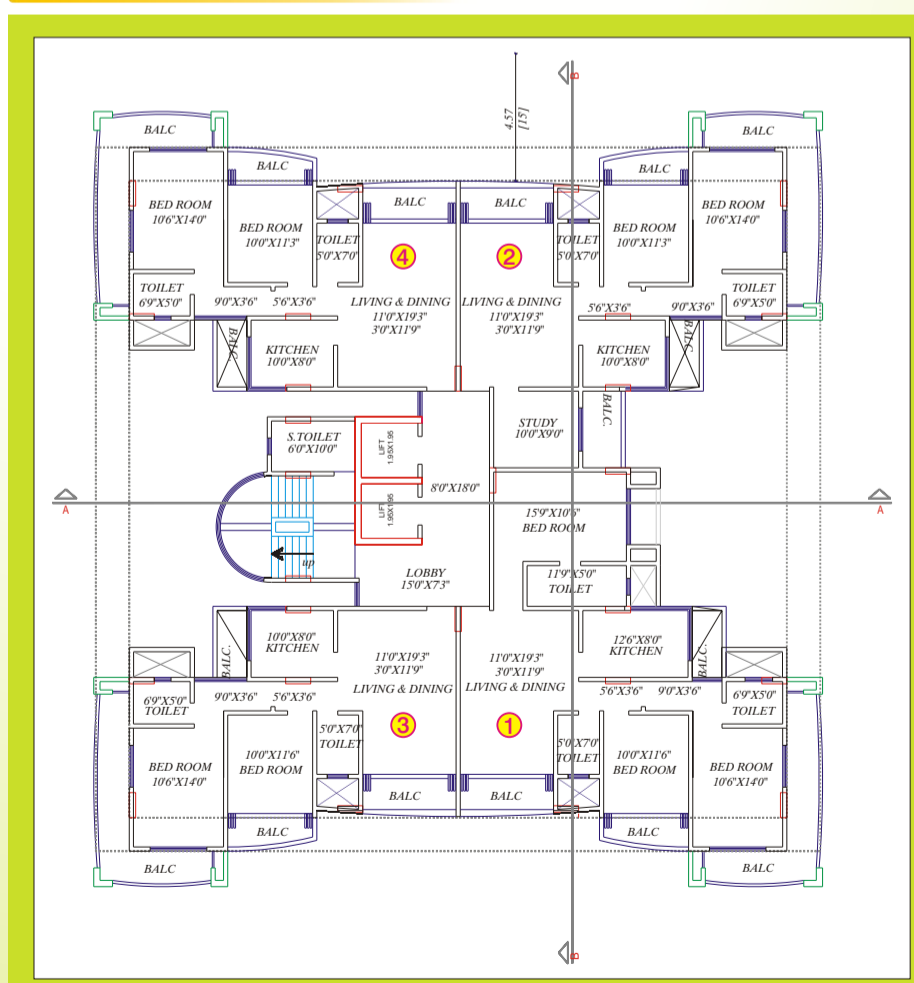
Flat No.	Total Super B.U.A. Area
Typical 1st to 5th floor	
1	3 BHK - 1661.93 sq/ft
2	2&1/2 BHK - 1392.30 sq/ft
3	2 BHK - 1236.58 sq/ft
4	2 BHK - 1236.58 sq/ft

Flat No.	Total Super B.U.A. Area
Typical 6th & 7th floor (Duplex)	
1	2149.90 + 579.52 (Terrace) sq/ft
2	2149.90 + 473.93 (Terrace) sq/ft
3	2149.90 + 334.11 (Terrace) sq/ft
4	2149.90 + 334.11 (Terrace) sq/ft

### Floor Plan - 5th Floor (Duplex)



### Floor Plan - 1st to 5th Floor



### Floor Plan - 7th Floor (Duplex)

